

rayjet



Rayjet 500

Economical industrial grade laser cutting and engraving solution for your business

The Rayjet 500 is the economical industrial grade laser cutter and engraver. The user-friendly laser software is easy to

learn, allowing laser users to quickly cut and engrave large format materials like acrylics, wood, paper or textiles.

Large working area and powerful laser

The working area of 1300 x 900 mm is perfectly suited for all standard sheet size materials in use today and cut up to 15 mm acrylics.

Wide variety of materials

The Rayjet 500 is suitable for laser cutting and engraving of large format materials like acrylics, wood, textiles, leather, cardboard, MDF, paper, and many other materials. Typical applications include signage, trophies, woodworking, prototypes, gifts and promotional items.

Powerful and user-friendly software

With the Rayjet Manager® and Rayjet Commander software files are sent from any graphic program directly to the laser cutter.

Two lasers integrated

Available as CO₂ DC single laser source version or with CO₂ DC and CO₂ RF ceramic laser source integrated. Use CO₂ DC for high powered cutting applications and CO₂ RF ceramic for fast and detailed engraving jobs.

rayjet



Rayjet 500

Economical industrial grade laser cutting and engraving solution for your business

The Rayjet 500 is the economical industrial grade laser cutter and engraver. The user-friendly laser software is easy to

learn, allowing laser users to quickly cut and engrave large format materials like acrylics, wood, paper or textiles.

Large working area and powerful laser

The working area of 1300 x 900 mm is perfectly suited for all standard sheet size materials in use today and cut up to 15 mm acrylics.

Wide variety of materials

The Rayjet 500 is suitable for laser cutting and engraving of large format materials like acrylics, wood, textiles, leather, cardboard, MDF, paper, and many other materials. Typical applications include signage, trophies, woodworking, prototypes, gifts and promotional items.

Powerful and user-friendly software

With the Rayjet Manager® and Rayjet Commander software files are sent from any graphic program directly to the laser cutter.

Two lasers integrated

Available as CO₂ DC single laser source version or with CO₂ DC and CO₂ RF ceramic laser source integrated. Use CO₂ DC for high powered cutting applications and CO₂ RF ceramic for fast and detailed engraving jobs.

Features and Upgrades

Rayjet Commander printer driver

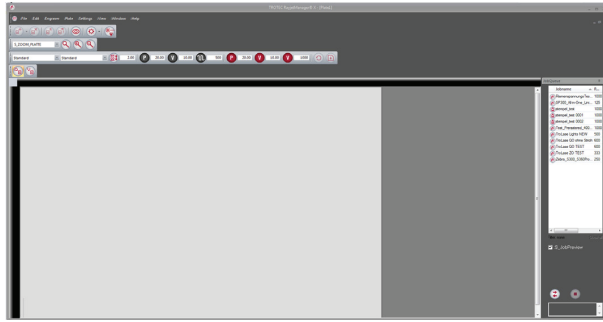
Rayjet Manager® laser software
incl. material database

Control panel for positioning the laser

Laser pointer

LED lighting

2" lens



Rayjet Manager®

Basis configuration: one table of choice*

* additional tables optional

- Aluminum cutting lamella table
- Aluminum cutting grid table
- Honeycomb table
- Vacuum table

Materials the Rayjet can process



Signage





Wood



Textiles



Plastics

	cut 	engrave 
Acrylic	•	•
Glass		•
Laminates	•	•
Leather	•	•
Paper	•	•
Plastics	•	•
Stone		•
Textiles	•	•
Wood	•	•

Laser Technical Specifications

	Rayjet 500	Rayjet 500D
Working area	1300 x 900 mm	
Laser power	Sealed CO ₂ 100 W DC	Sealed CO ₂ 100 W DC and sealed CO ₂ 60 W RF ceramic
Cooling system	water cooled	
Max. processing speed	1 m/sec.	
Laser safety	CDRH laser safety, laser class 2, CE compliant, double interlock safety system	
Machine size (W x D x H)	1870 x 1725 x 1110 mm	
Weight	approx. 340 kg	
Power consumption laser machine	220 - 240 V / 3000 W	
Power consumption chiller	2500 W	



Your Smart Choice!

LH MACHINERY TRADING (001944949-W)

No.10, Jalan One Industrial Park 2, One Industrial Park, 43300 Seri Kembangan, Selangor Darul Ehsan.

Tel: +603-8964 5888 / +603-8964 4488 Fax: +603-8964 4884

H/P: +6012 306 2247, +6012 316 8163

Email: sales@lhtech.com.my Web: www.lhmachinery.com